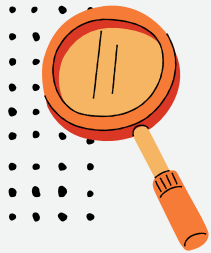


What is competency-based education?

What's the difference between competency-based (CB) programs and traditional ones? What you learn may be the same, but CB programs offer an accelerated pathway to earning your degree. That's because you can progress as you learn and demonstrate your knowledge. Here's a closer look at how the two approaches stack up.

Competency-based education



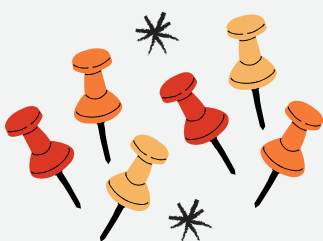
Offers a high degree of personalization and self-paced learning.



Can be completed in a shorter amount of time compared to traditional programs, particularly for students with existing knowledge and experience in the field.



Students receive dedicated support as needed from faculty and may have limited interaction with peers.

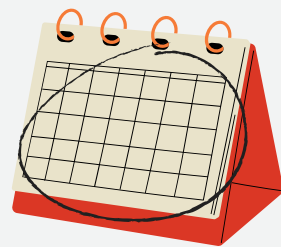


Students advance based on their ability to learn and demonstrate skills or competencies within the program.

Traditional education



Typically follows a structured format with less flexibility for self-paced learning.



Follows a longer timeline for completion, typically spanning several years for a bachelor's degree.



Opportunities for interaction with instructors and peers through class discussions, group projects and office hours.



Follows a fixed schedule with set lesson plans and weekly assignments.